



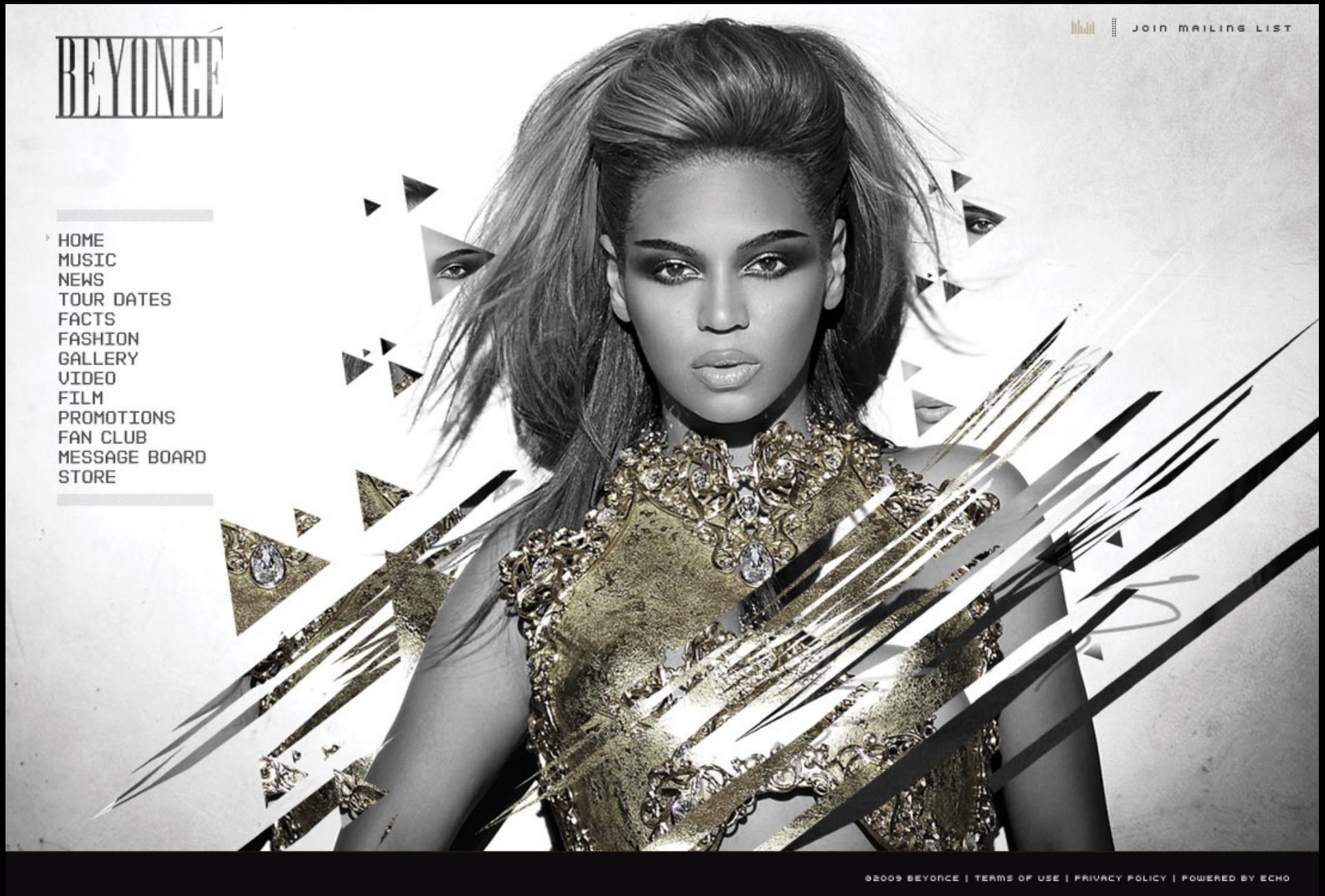
PORTFOLIO OF ELIJAH LAMB WASSERMAN

WWW.ELIJAHWASSERMAN.COM

E: ELIJAHWASSERMAN@GMAIL.COM

P: 615-854-3388 | NASHVILLE, TN

WEBSITE DESIGN FOR BEYONCE'



WEBSITE DESIGN FOR BEYONCE'



BEYONCÉ

JOIN MAILING LIST

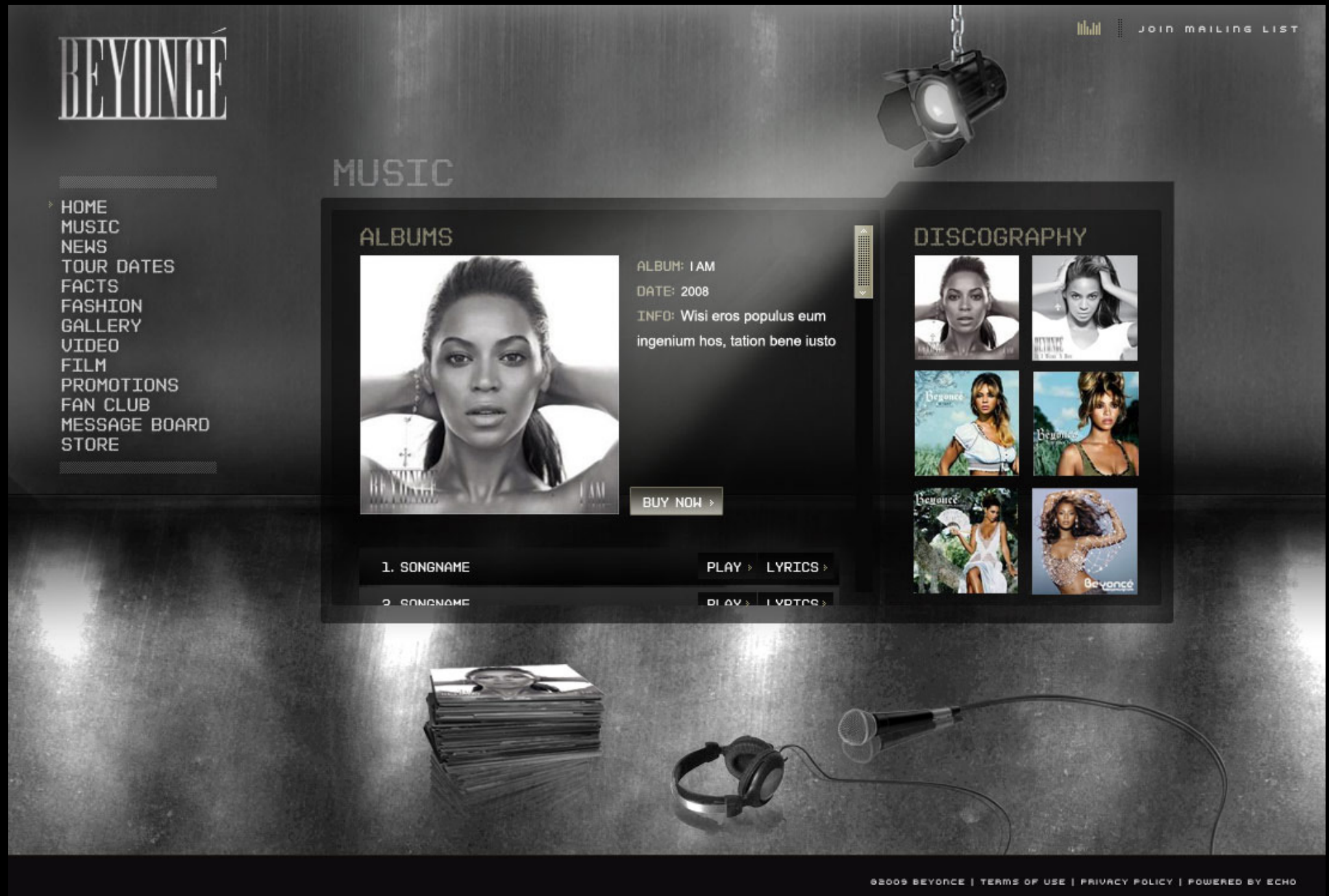
HOME
MUSIC
NEWS
TOUR DATES
FACTS
FASHION
GALLERY
VIDEO
FILM
PROMOTIONS
FAN CLUB
MESSAGE BOARD
STORE

©2005 BEYONCÉ | TERMS OF USE | PRIVACY POLICY | POWERED BY ECHO

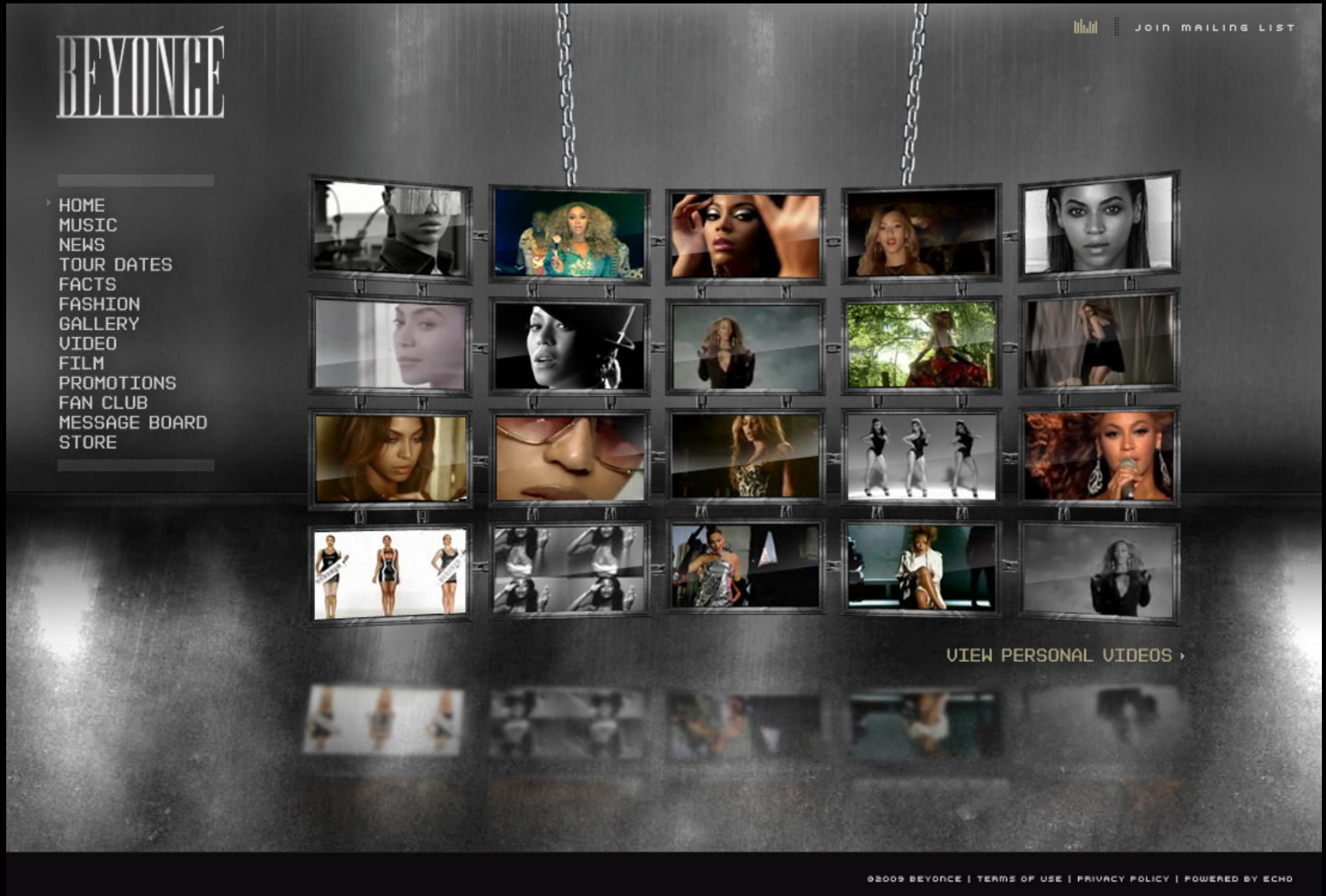
WEBSITE DESIGN FOR BEYONCE'

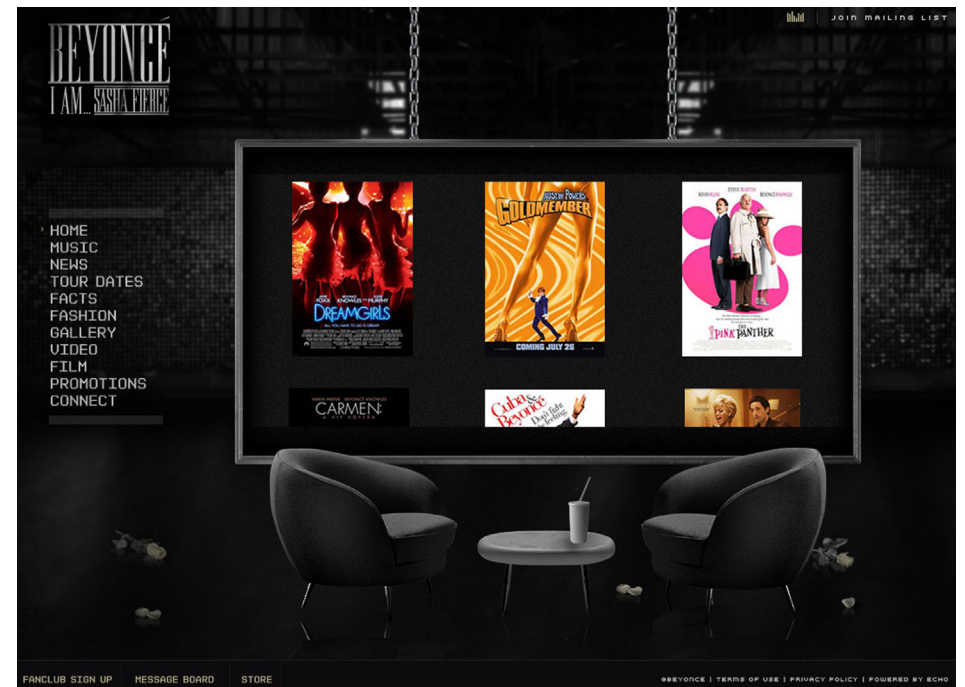
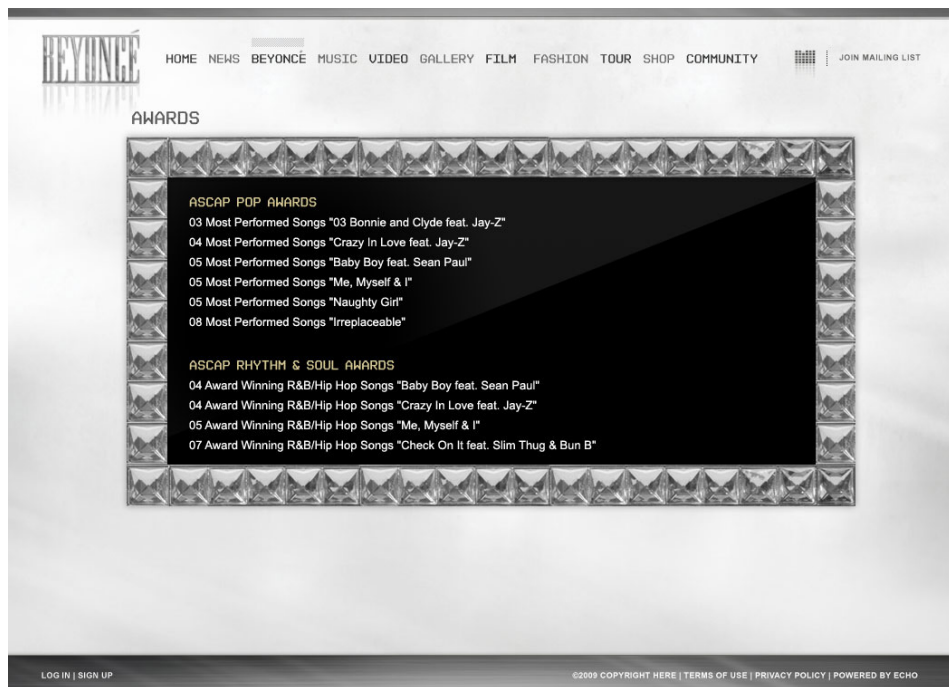
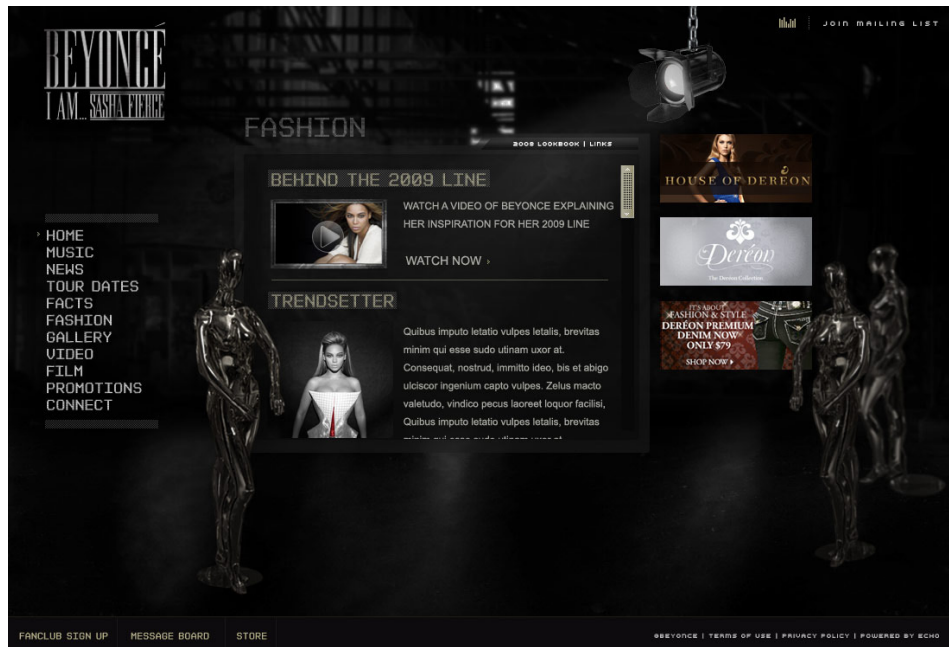


WEBSITE DESIGN FOR BEYONCÉ'



WEBSITE DESIGN FOR BEYONCE'

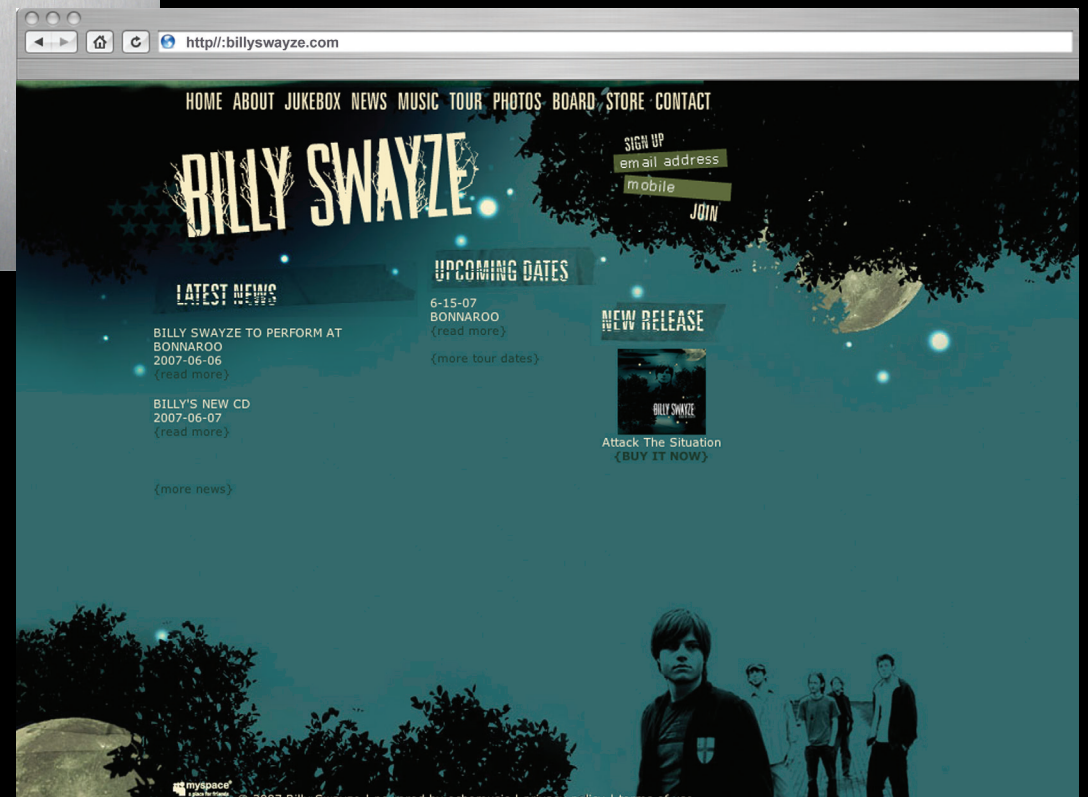




CD COVER FOR ALANA GRACE_



CD COVER & WEBSITE DESIGN FOR BILLY SWAYZE_



LOGO DESIGN FOR BILLY SWAYZE_

BILLY SWAYZE

BILLY SWAYZE

LOGO DESIGNS_



NATURWRK



DJKOSSII

**WOLFEN
GRIND**

JINTRA

VISUAL IDENTITY FOR SABAI THERAPEUTIC MASSAGE_



sabai

THERPEUTIC MASSAGE

 **sabai**
THERPEUTIC MASSAGE

 **sabai**
THERPEUTIC MASSAGE

SOUWALY INTHAVONG LMT
413-684-0133
sabaimassagenashville@gmail.com
3302 Belmont Boulevard
Nashville, Tennessee 37212

 **sabai**
THERPEUTIC MASSAGE

SOUWALY INTHAVONG LMT
413-684-0133
sabaimassagenashville@gmail.com
3302 Belmont Boulevard
Nashville, Tennessee 37212

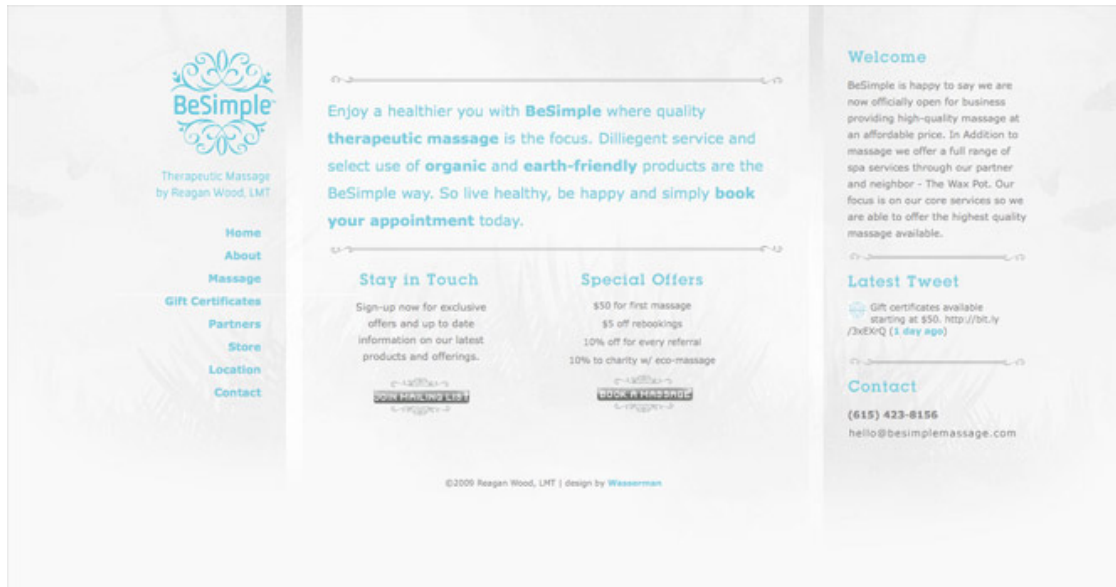
 **sabai**
THERPEUTIC MASSAGE

HOME | ABOUT
LOCATION | CONTACT

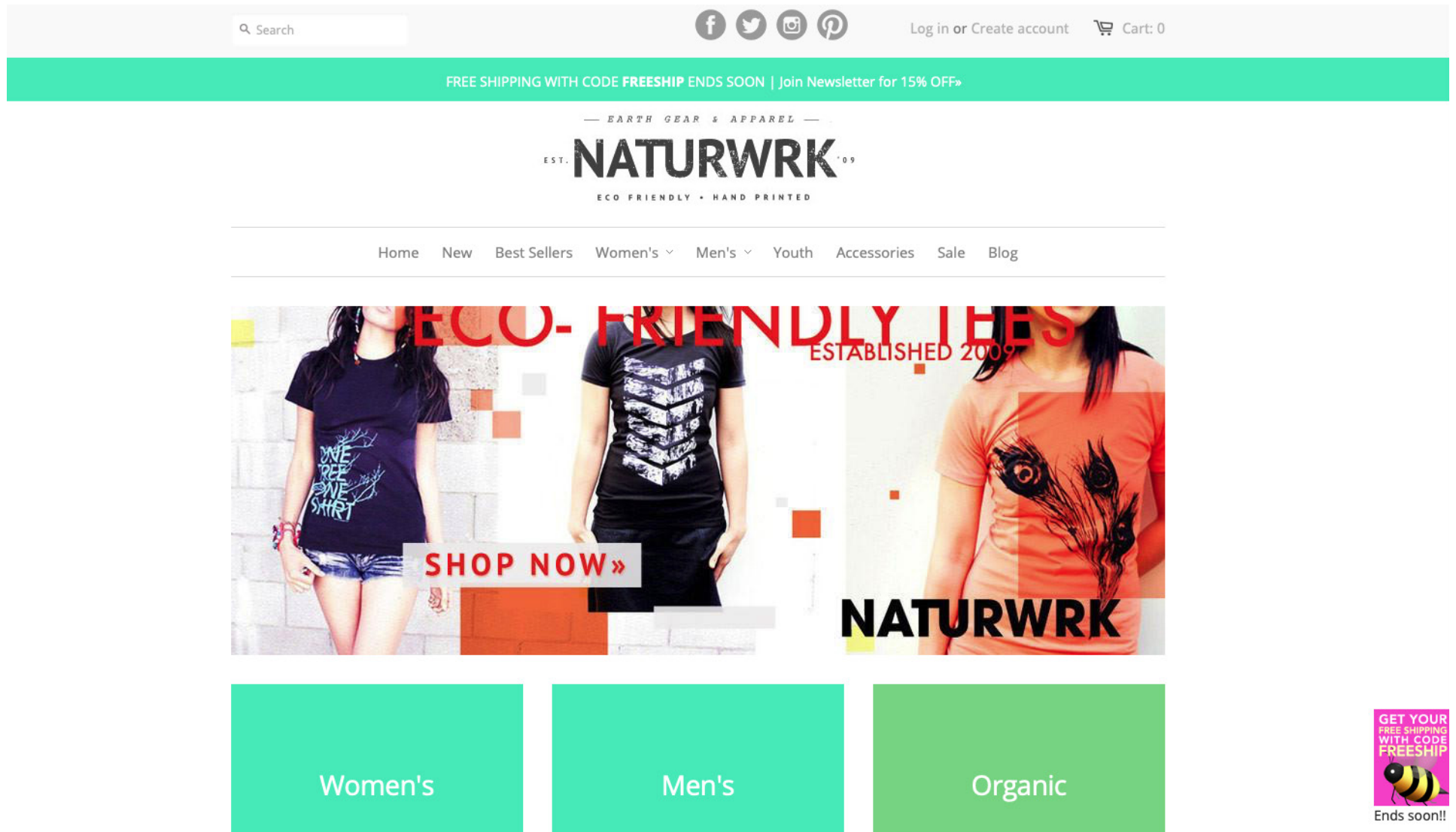
LOCATION

sabaimassagenashville@gmail.com

WEBSITE, IDENTITY & COLLATERAL FOR BE SIMPLE MASSAGE_



E-COMMERCE WEBSITE FOR NATURWRK.COM_



POSTER FOR STANFORD UNIVERSITY_

CAPTURING COMPLEXITY: the scientific, societal, and ethical meanings of "environment" in genetic research

A key question in genetic research is how environment is conceptualized, measured, and operationalized in the study of complex traits. While we have been approaching broad consensus about accepting the complexity of gene-environment interaction and its influence on human behavior, the actual characterization of the environment is problematic and in need of interdisciplinary and integrative approaches to finding solutions to this problem. This symposium will bring together perspectives from a wide range of disciplines to discuss the scientific, societal, and ethical meanings associated with defining "environment" when talking about and conducting studies on the genetic basis of behavioral and other complex traits.

Michael Rutter, *Psychiatry and Behavioral Genetics, King's College London*
Kenneth Schaffner, *History & Philosophy of Science, University of Pittsburgh*
Eric Turkheimer, *Psychology, University of Virginia*
Andrew Perrin, *Sociology, University of North Carolina*
Ruth Ottman, *Genetic Epidemiology, Columbia University*
David Craig, *Neurogenetics, TGen*
Catherine Schaefer, *Program on Genes, Environment, and Health, Kaiser Permanente Research*
Atul Butte, *Medical Informatics and Pediatrics, Stanford University*
Paul Wise, *Child Health and Pediatrics, Stanford University*
Richard Sharp, *Bioethics, Cleveland Clinic*
Sara Shostak, *Sociology, Brandeis University*
Marcus Feldman, *Biological Sciences, Stanford University*
Paul Ehrlich, *Biological Sciences, Stanford University*
Henry "Hank" Greely, *Law, Stanford University (Moderator)*

Open to the public.
Clark Center Auditorium, Stanford University
Friday May 9, 2008
1pm-6pm

Questions? Please contact Jen McCormick (jenmc@stanford.edu).
http://cgs.stanford.edu/environment_genes_2008/

Sponsored by the Stanford Center for Biomedical Ethics and the Center for Integration of Research on Genetics and Ethics

CAPTURING COMPLEXITY

ROTATOR BANNERS FOR NATURWRK.COM_



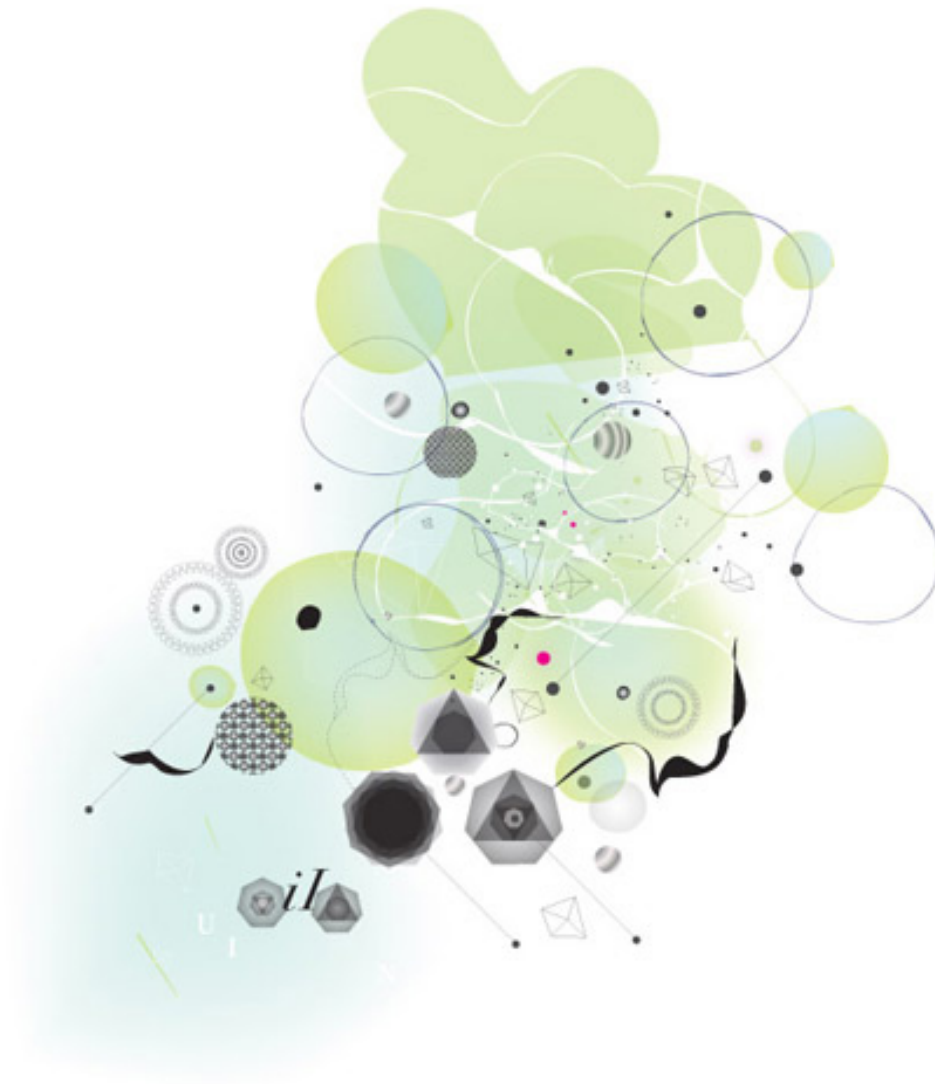
APPAREL DESIGN FOR NATURWRK.COM_



COFFEE COMPANY PACKAGING_



DIGITAL ILLUSTRATION_





WONDERRUM





ILLUSTRATION FOR ANIMATION_



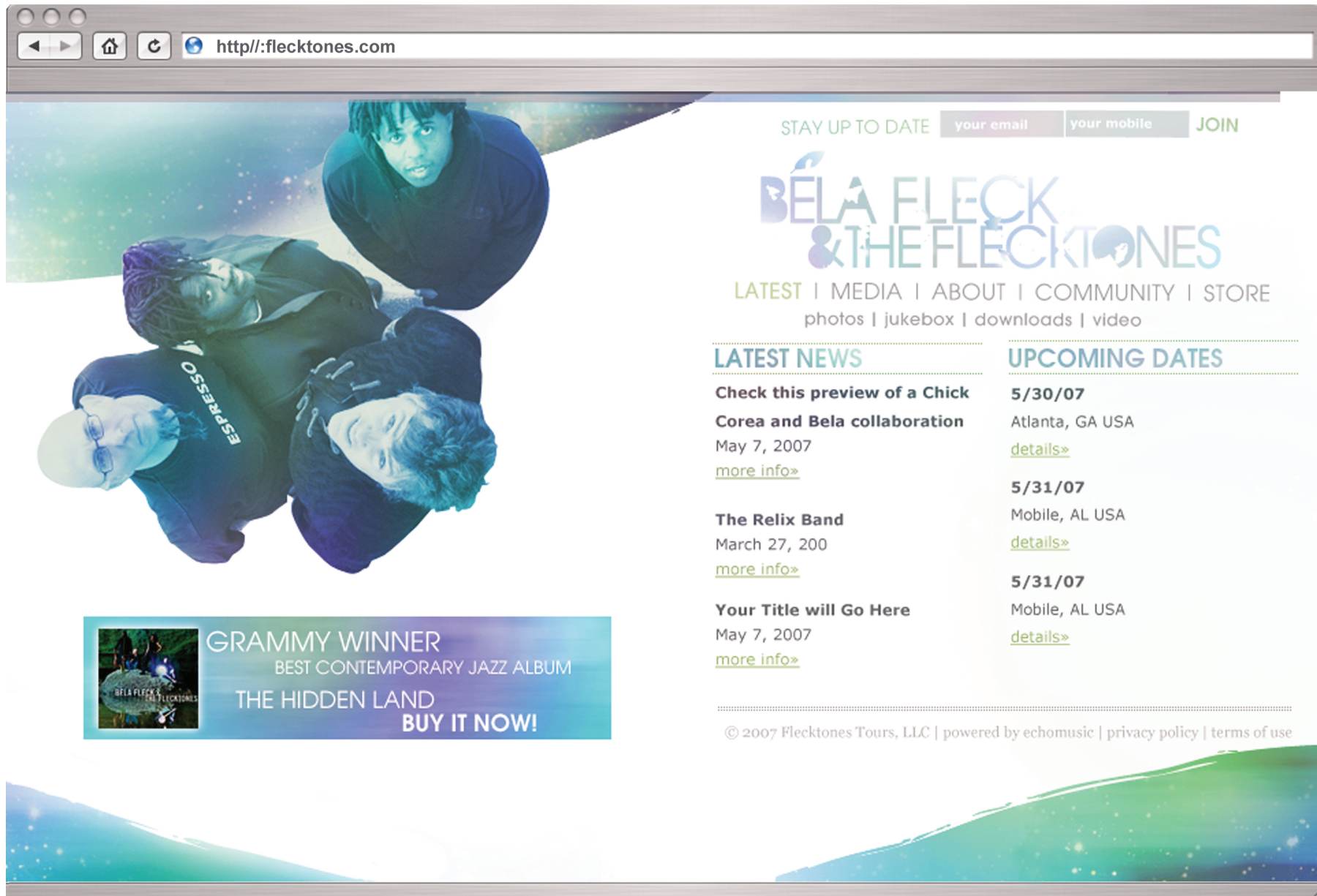
WEBSITE DESIGN FOR BRAD PAISLEY_



WEBSITE DESIGN FOR KARL DENSON_



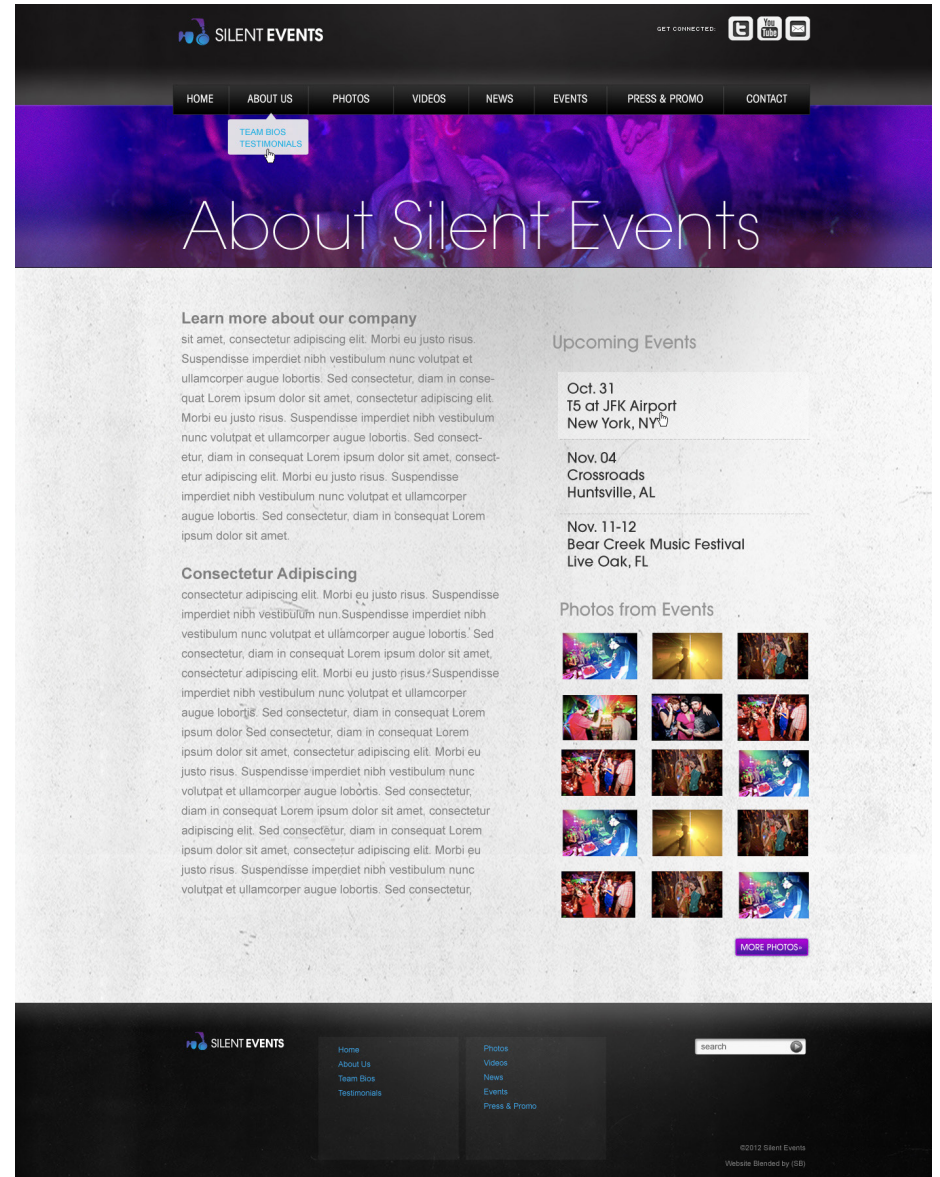
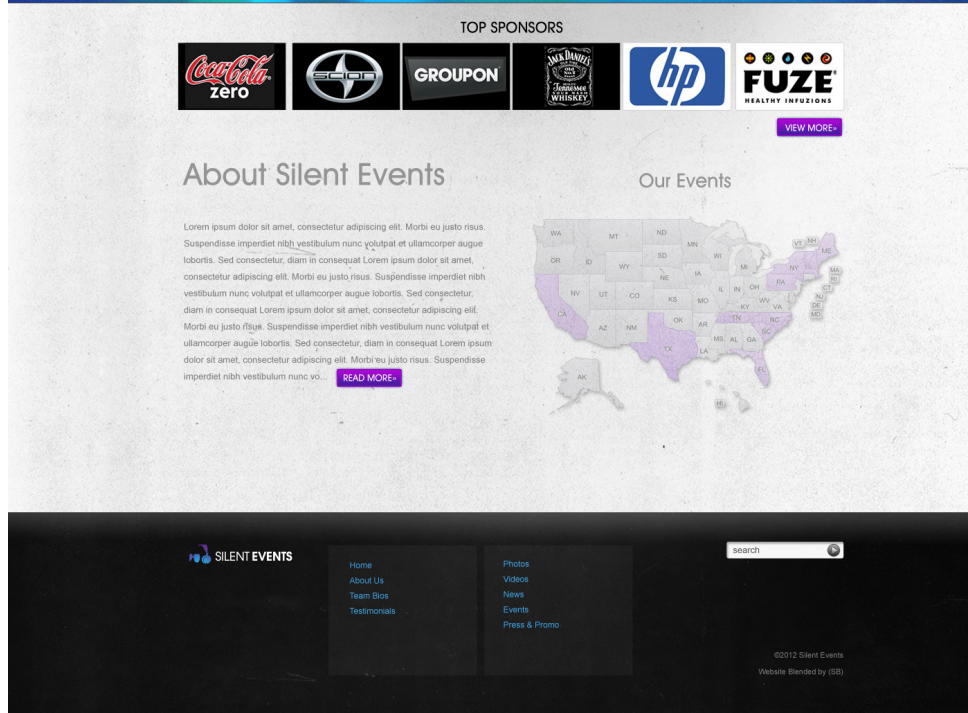
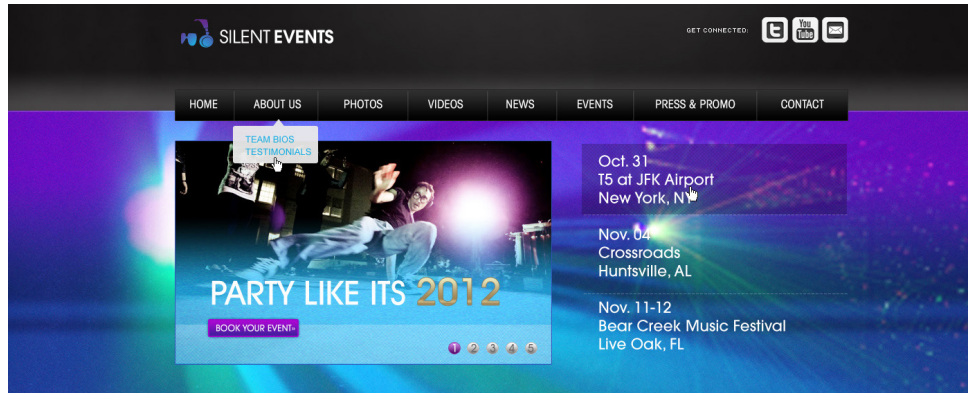
WEBSITE DESIGN FOR BELA FLECK & THE FLECKTONES_



MINI SITE FOR DJ TOOMP_



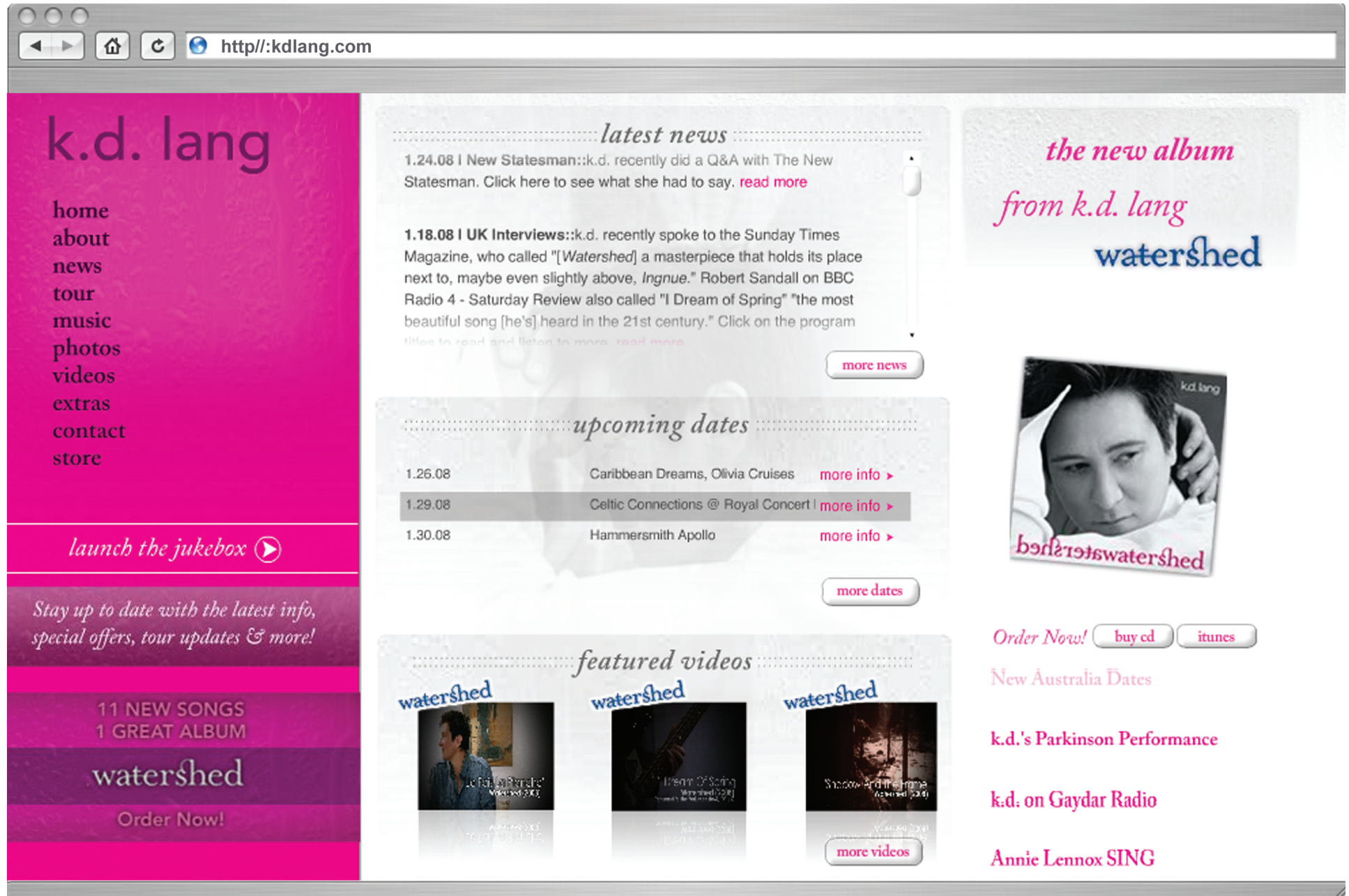
SILENT EVENTS WEBSITE_



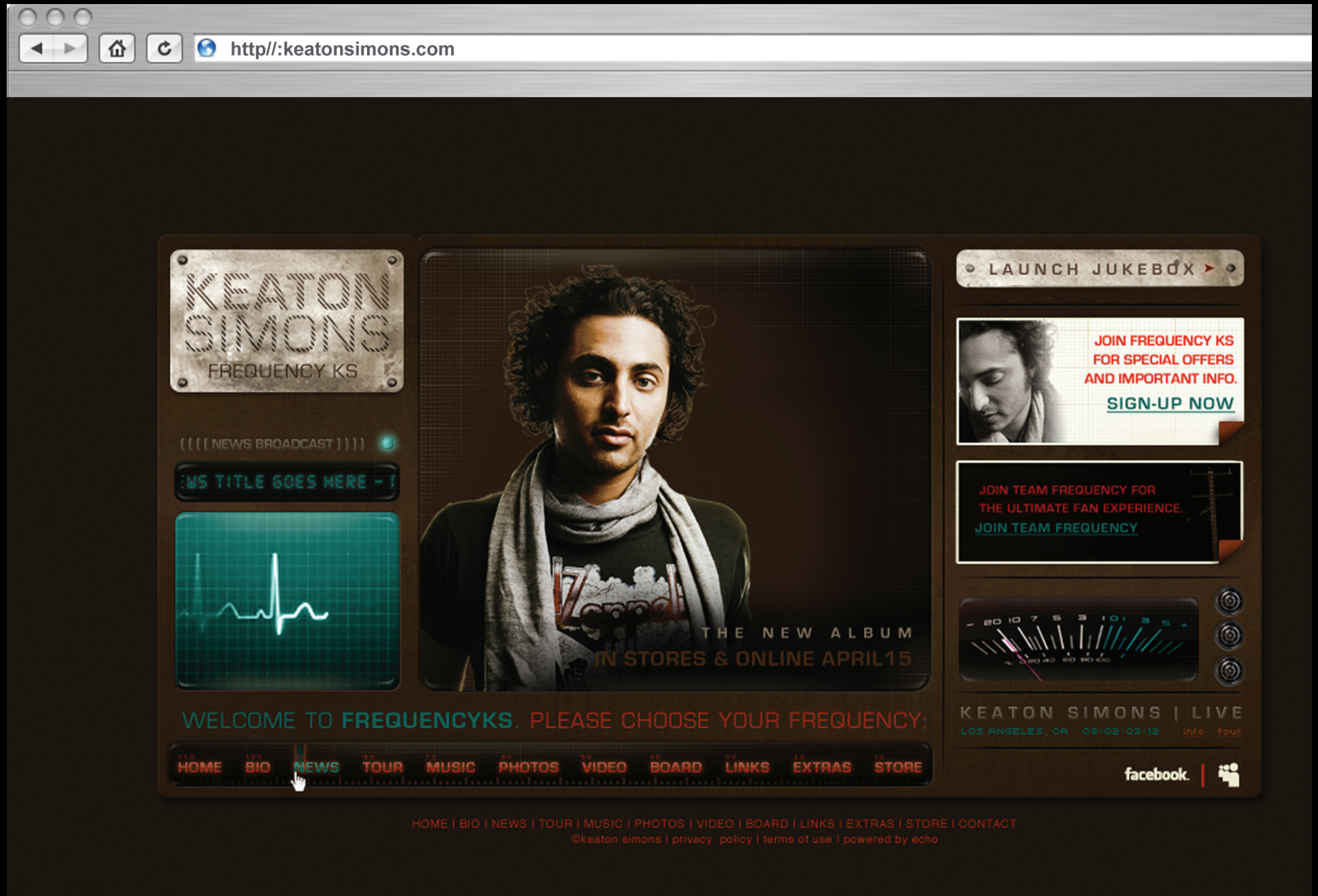
WEBSITE RESKIN FOR JONAS BROTHERS_



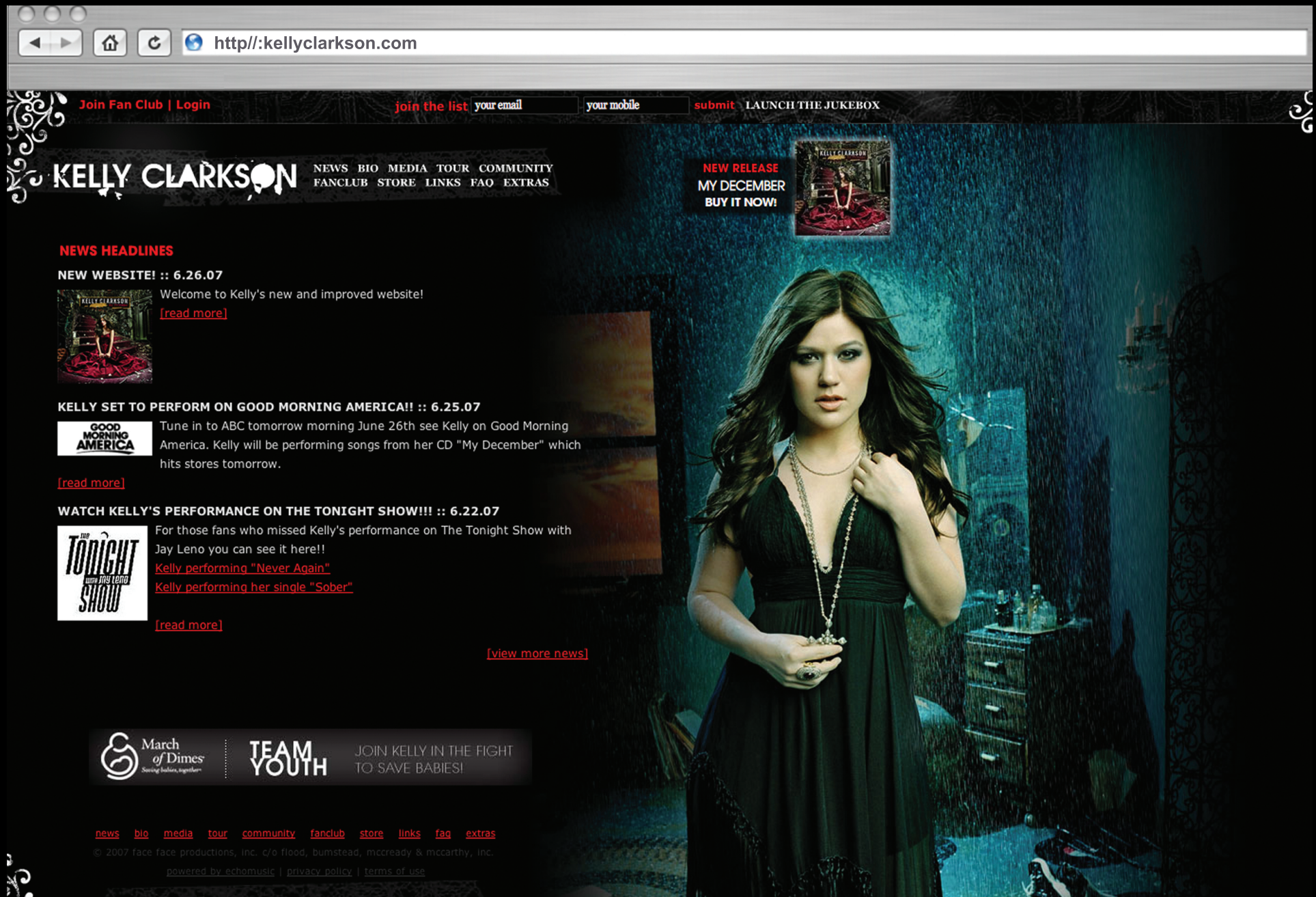
WEBSITE DESIGN FOR KD LANG_



WEBSITE FOR KEATON SIMONS_



WEBSITE FOR KELLY CLARKSON_



PORTFOLIO OF ELIJAH LAMB WASSERMAN

WWW.ELIJAHWASSERMAN.COM

E: ELIJAHWASSERMAN@GMAIL.COM

P: 615-854-3388 | NASHVILLE, TN

